

view looking north

Penn Park Playground Shelter

GENERAL NOTES

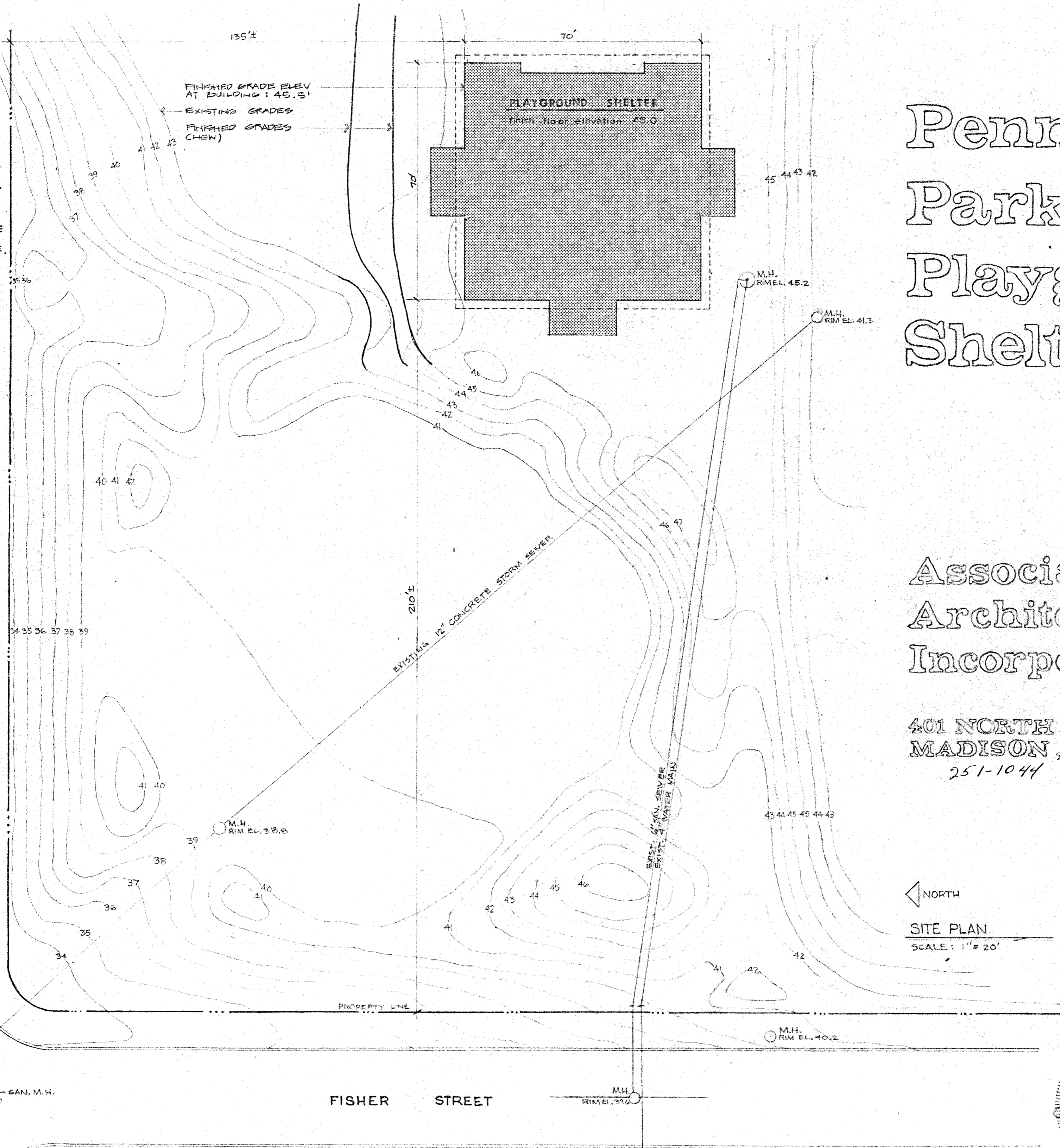
STRIP TOPSOIL FROM BLDG. AREA TO GRANULAR SUBSOIL AND SPREAD TOPSOIL TO THE NORTH AND EAST OF THE BLDG.

FILL TO UNDERSIDE OF FLOOR SLABS WITH COMPACTED GRANULAR FILL COMPACTED TO 95% DENSITY.

SEE SPECIAL CONDITIONS & SPECIFICATIONS FOR SITE ACCESS AND SIGN FENCE.

PROTECT EXISTING TREES, PAVING, LAWN AREAS AND OTHER EXISTING FEATURES FROM DAMAGE. ANY DAMAGE SHALL BE REPAIRED BY CONTRACTOR AT HIS EXPENSE.

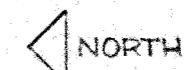
EXACT LOCATION OF BUILDING TO BE APPROVED BY OWNER BEFORE BEGINNING WORK.



Penn Park Playground Shelter

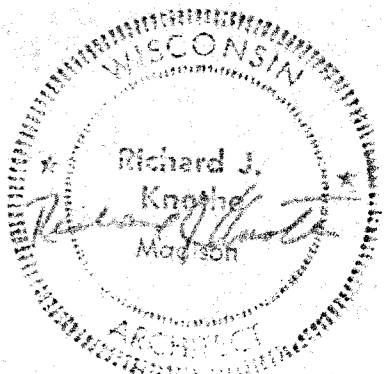
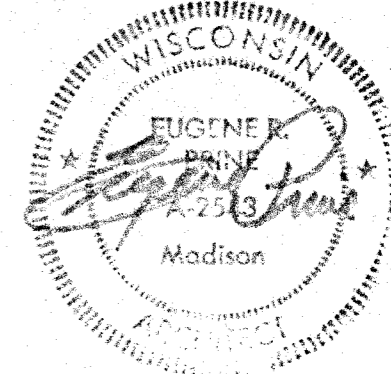
Associated Architects Incorporated

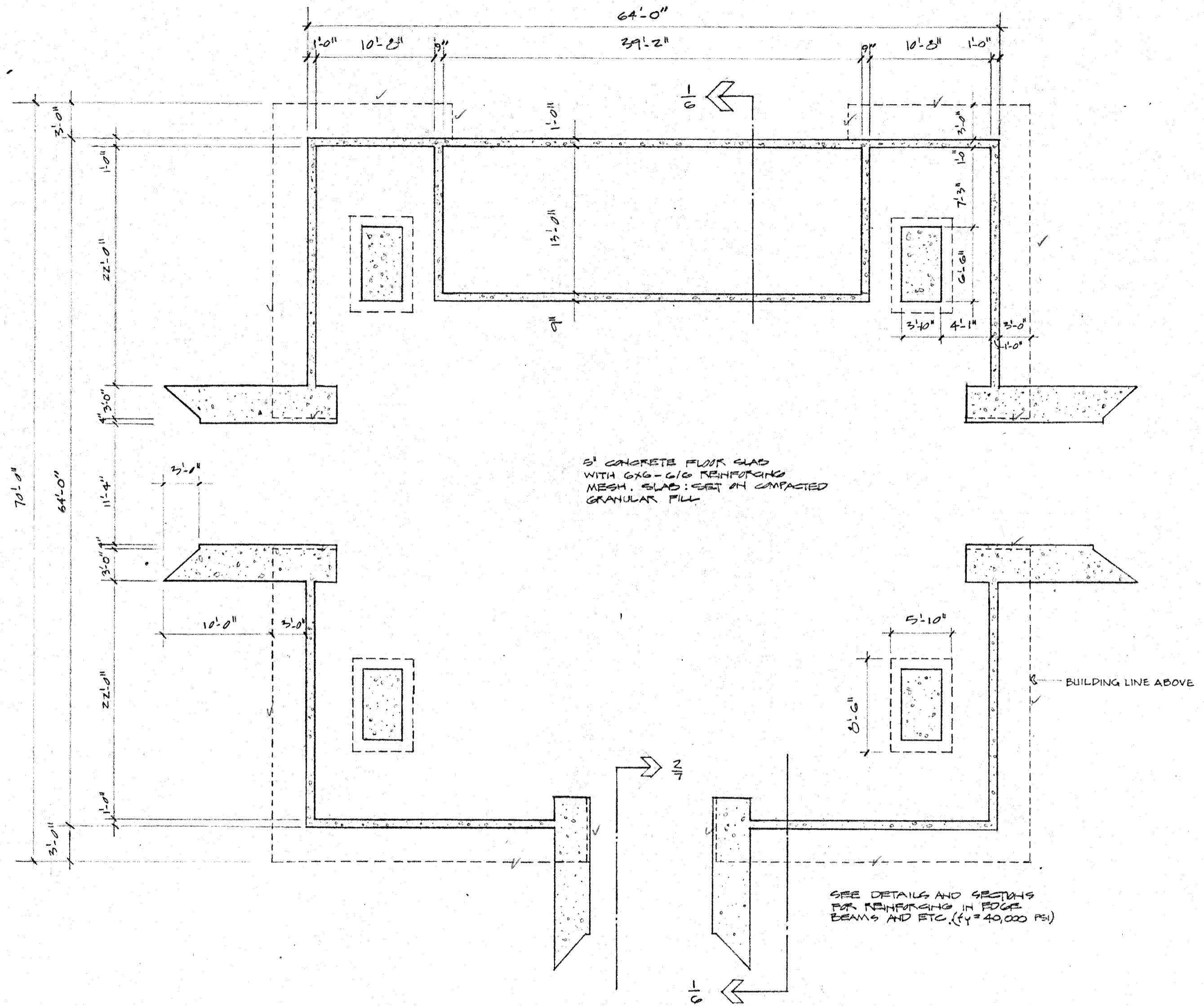
401 NORTH CARROLL STREET
MADISON, WISCONSIN
251-1044



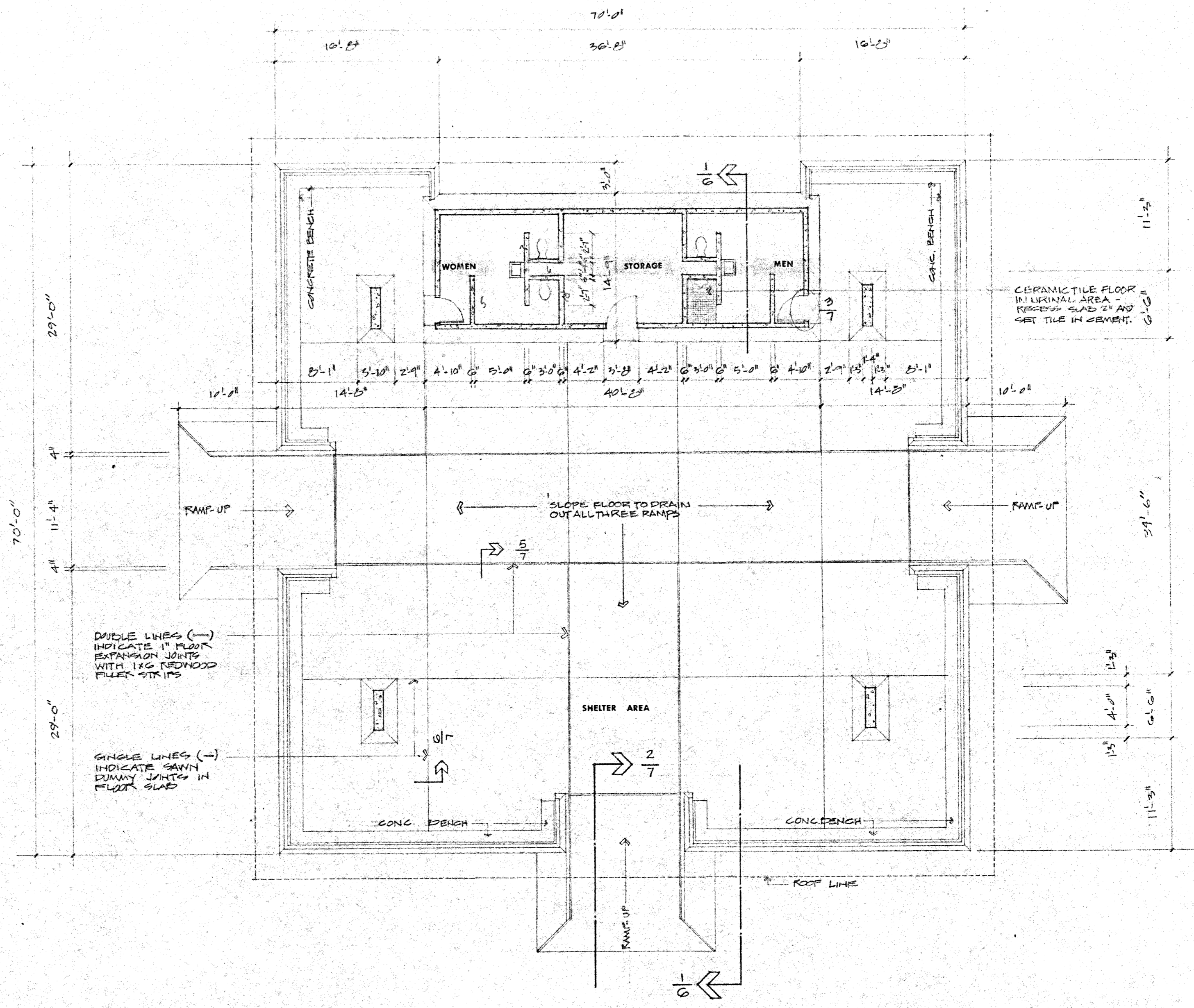
SITE PLAN
SCALE: 1" = 20'

CITY OF MADISON
CONTRACT NO. 252





FOUNDATION PLAN
SCALE: 1/8" = 1'-0"



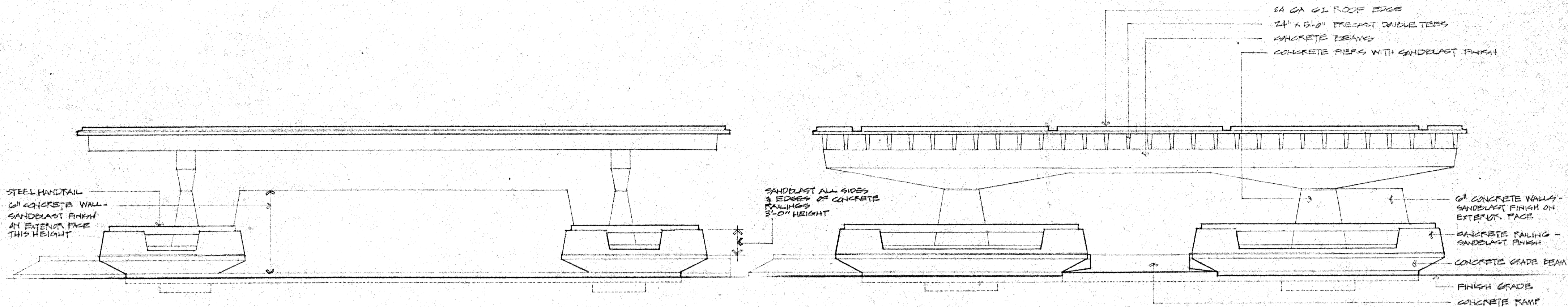
FLOOR PLAN
SCALE: 1/8" = 1'-0"

PENN PARK PLAYGROUND SHELTER
MADISON, WISCONSIN

**Associated
Architects
Incorporated**

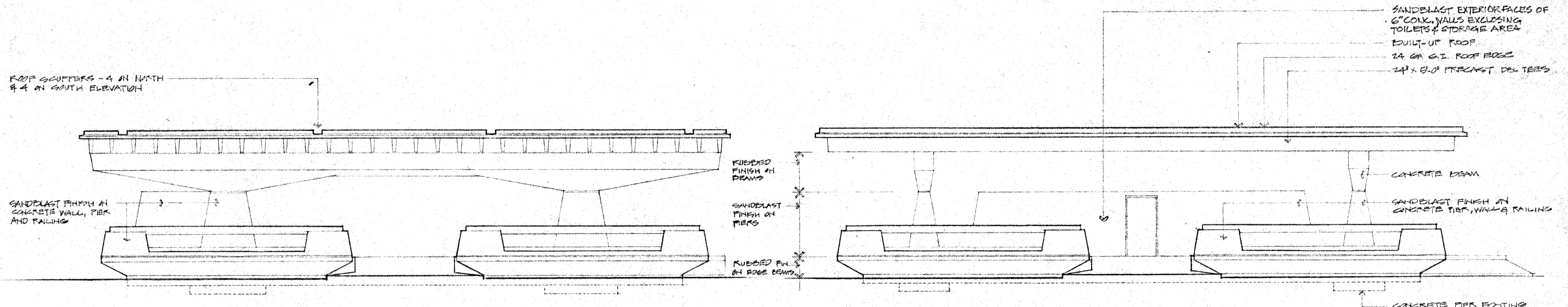
Madison Wisconsin
 drawn by: R.W. & J.G.
 date: Oct. 1967
 commission: 6920

Richard Knothe, Gene Prime and Associates



EAST ELEVATION
SCALE: 1/8" = 1'-0"

NORTH ELEVATION
SCALE: 1/8" = 1'-0"



SOUTH ELEVATION
SCALE: 1/8" = 1'-0"

WEST ELEVATION
SCALE: 1/8" = 1'-0"

PENN PARK PLAYGROUND SHELTER
MADISON, WISCONSIN

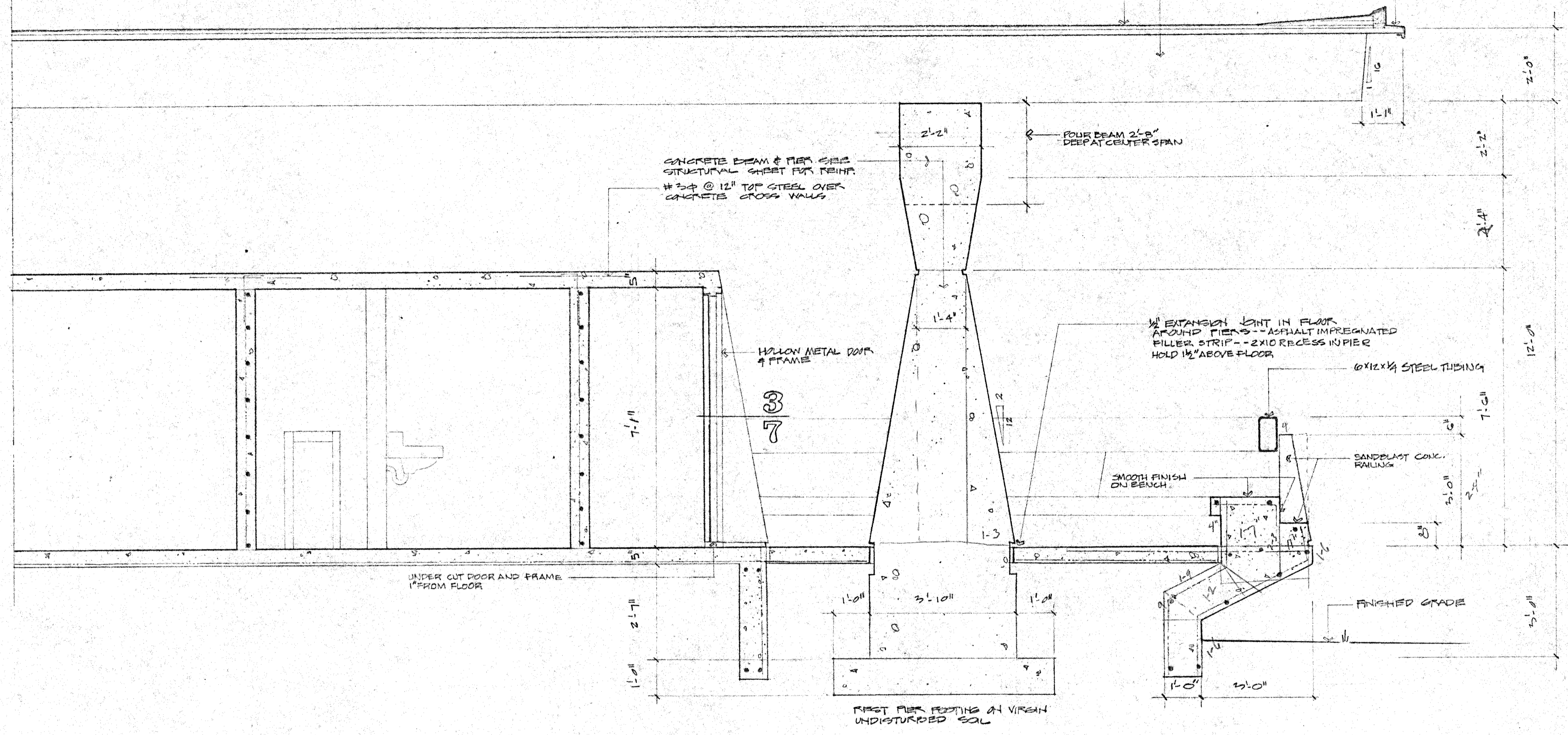
**Associated
Architects
Incorporated**

Madison Wisconsin
drawn by: R.K.
date: OCT. 1949
commission: 6920

Richard Knutts, Gene Price and Associates

4

E. CLOS.



SECTION 1
SCALE: 1/2"=1'-0"

PENN. PARK PLAYGROUND SHELTER
MADISON, WISCONSIN

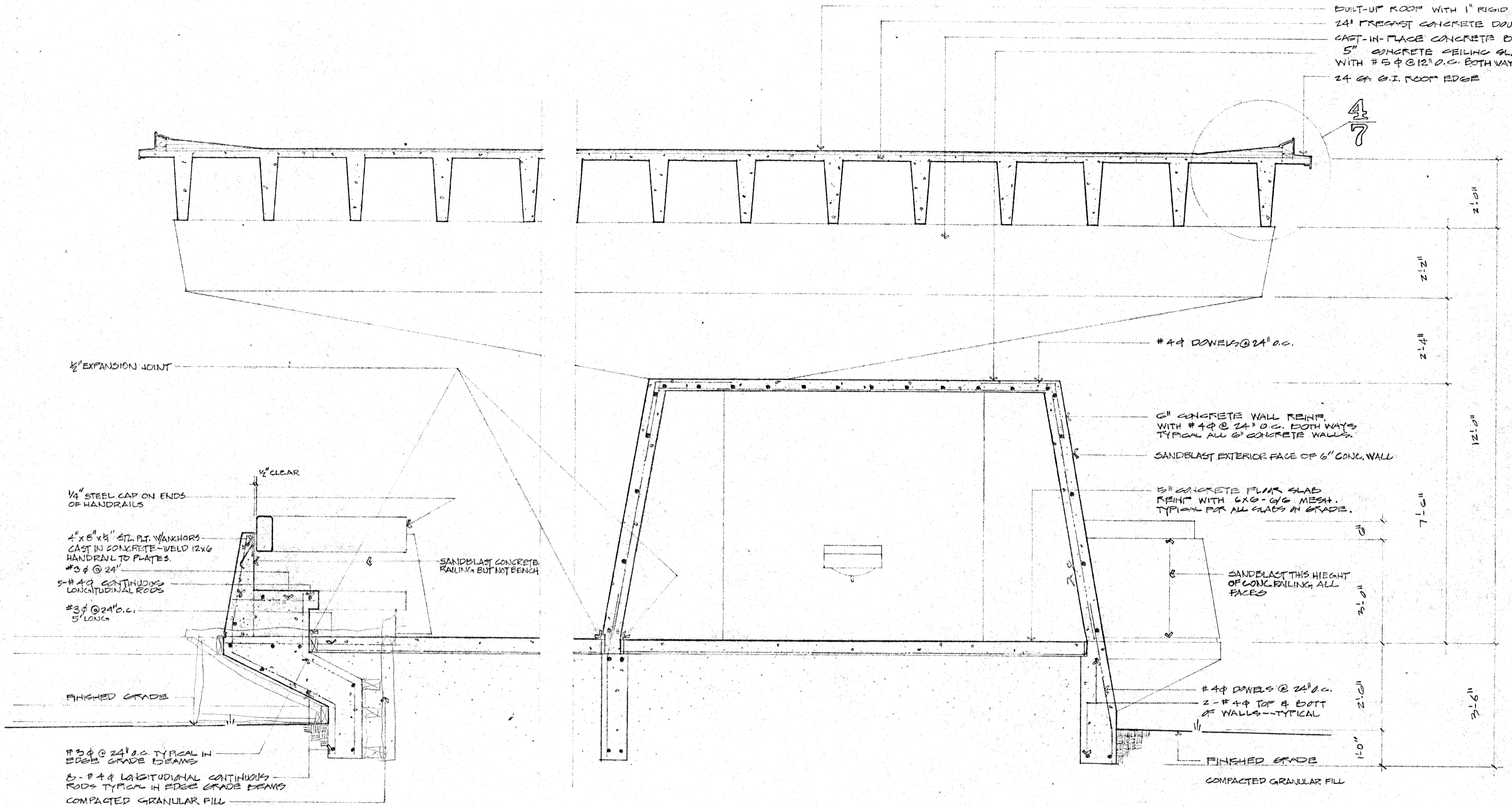
**Associated
Architects
Incorporated**

Madison, Wisconsin
drawn by: R.H.
date: OCT. 1969
commission: 6920
Richard Knott, Gene Price and Associates



BUILT-UP ROOF WITH 1" RIGID INSULATION
 24" PRECAST CONCRETE DOUBLE TEES
 CAST-IN-PLACE CONCRETE BEAM & PIER
 5" CONCRETE CEILING SLAB REINF.
 WITH #5 @ 12" O.C. BOTH WAYS.
 24" G.I. ROOF EDGE

4
7



1/2" EXPANSION JOINT

1/4" STEEL CAP ON ENDS OF HANDRAILS

4" x 6" x 1/2" STL. PLT. W/ ANCHORS CAST IN CONCRETE - WELD 12x6 HANDRAIL TO PLATES

#3 @ 24"

5-#4 CONTINUOUS LONGITUDINAL RODS

#3 @ 24" O.C. 5' LONG

FINISHED GRADE

#3 @ 24" O.C. TYPICAL IN EDGE GRADE BEAMS

5-#4 LONGITUDINAL CONTINUOUS RODS TYPICAL IN EDGE GRADE BEAMS
 COMPACTED GRANULAR FILL

SECTION 1
 SCALE: 1/2" = 1'-0"

#4 DOWELS @ 24" O.C.

6" CONCRETE WALL REINF. WITH #4 @ 24" O.C. BOTH WAYS TYPICAL ALL 6" CONCRETE WALLS

SANDBLAST EXTERIOR FACE OF 6" CONG. WALL

5" CONCRETE FLOOR SLAB REINF. WITH 6x6 G/G MESH. TYPICAL FOR ALL SLABS AT GRADE.

SANDBLAST THIS HEIGHT OF CONG. RAILING, ALL FACES

#4 DOWELS @ 24" O.C. 2-#4 TOP & BOT OF WALLS - TYPICAL

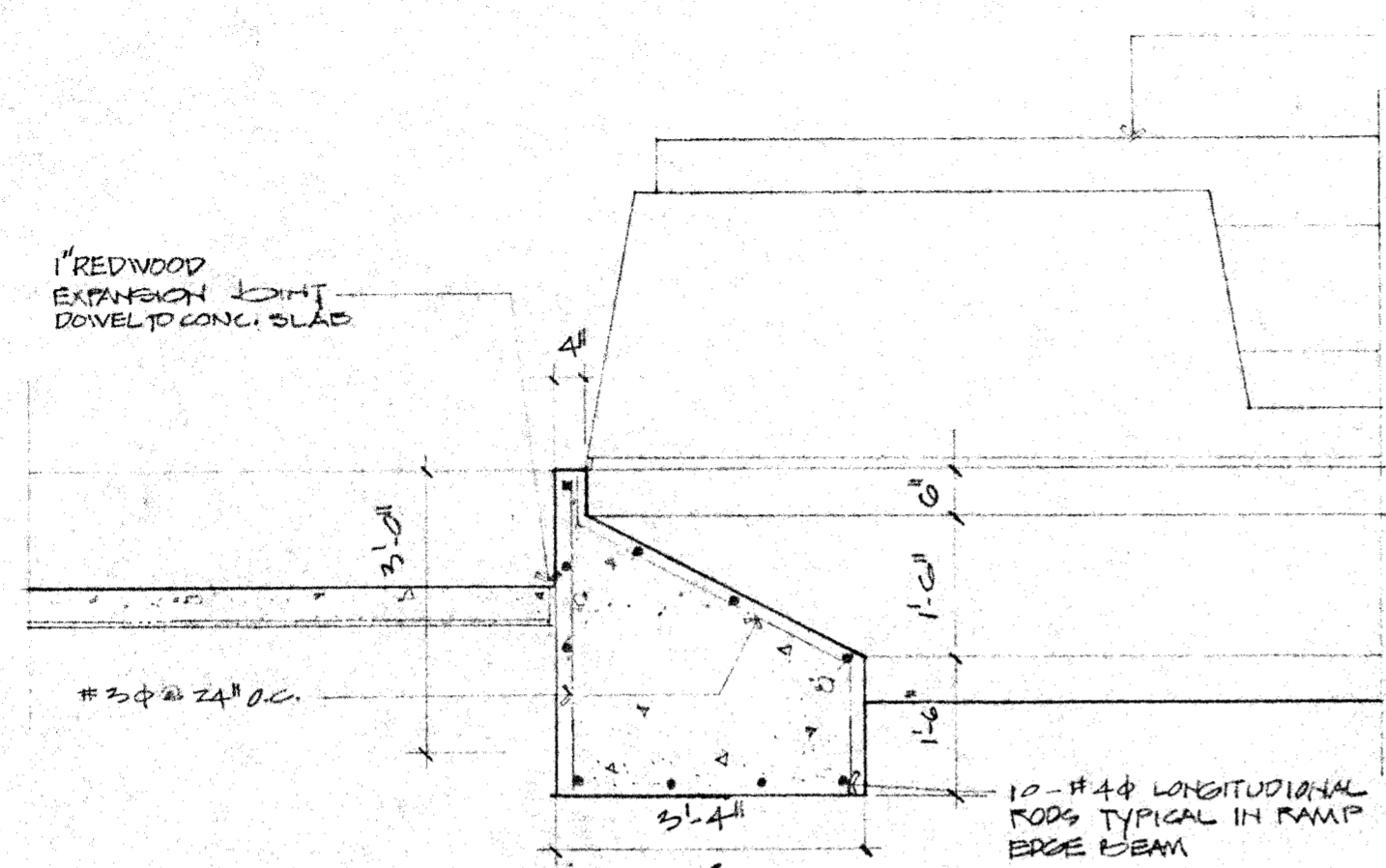
FINISHED GRADE
 COMPACTED GRANULAR FILL

PENN PARK PLAYGROUND SHELTER
 MADISON, WISCONSIN

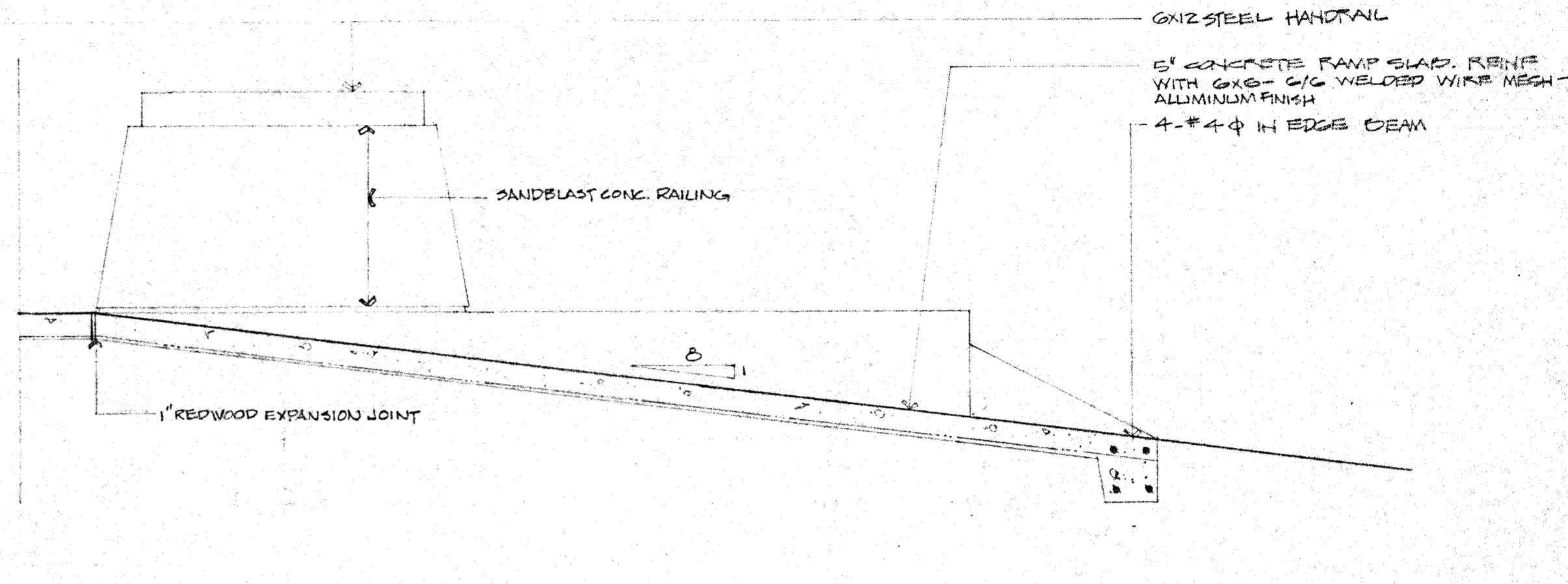
Associated
 Architects
 Incorporated

Madison Wisconsin
 drawn by: R.V.
 date: OCT. 1967
 commission: 6920
 Richard Knobel, Gene Price and Associates

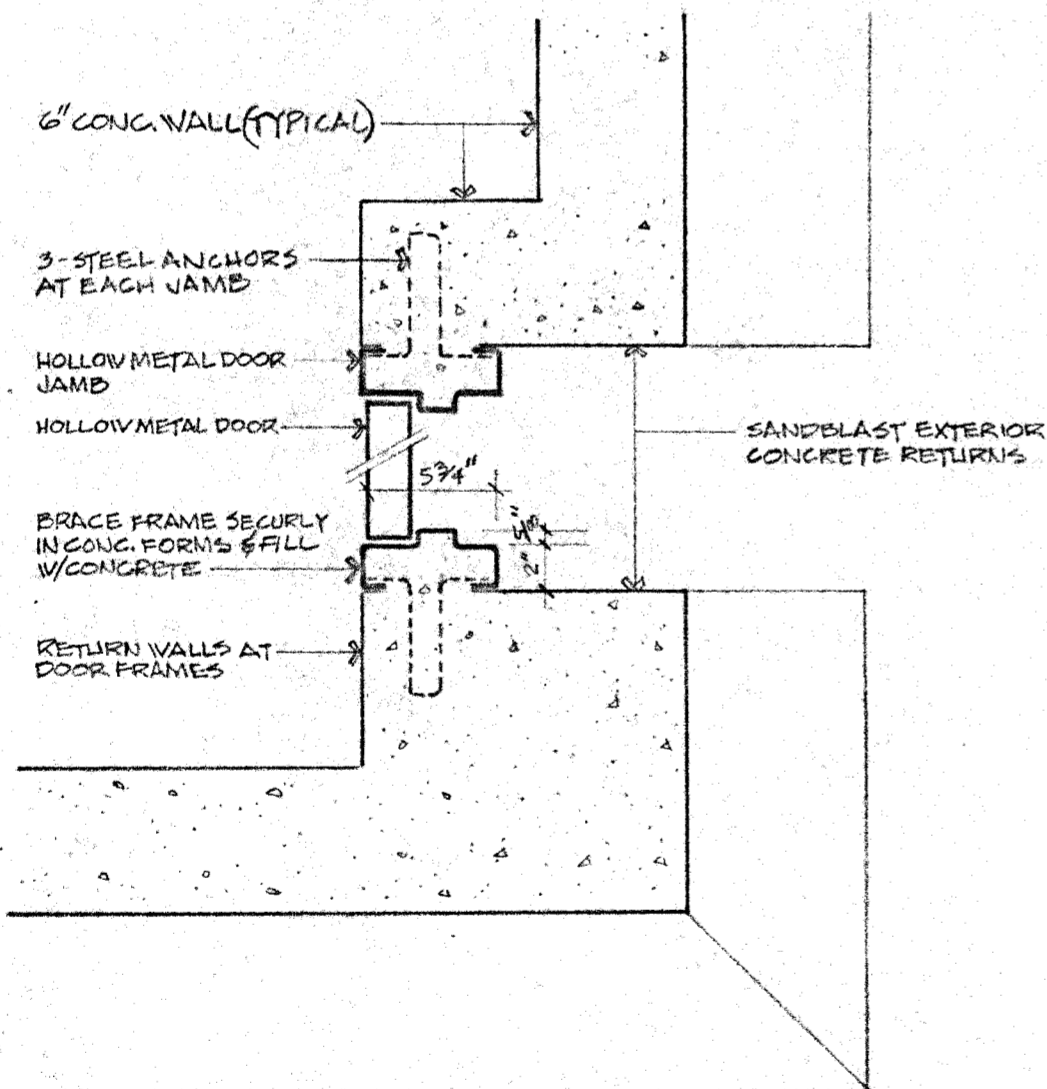




SECTION 1
SCALE: 1/2" = 1'-0"

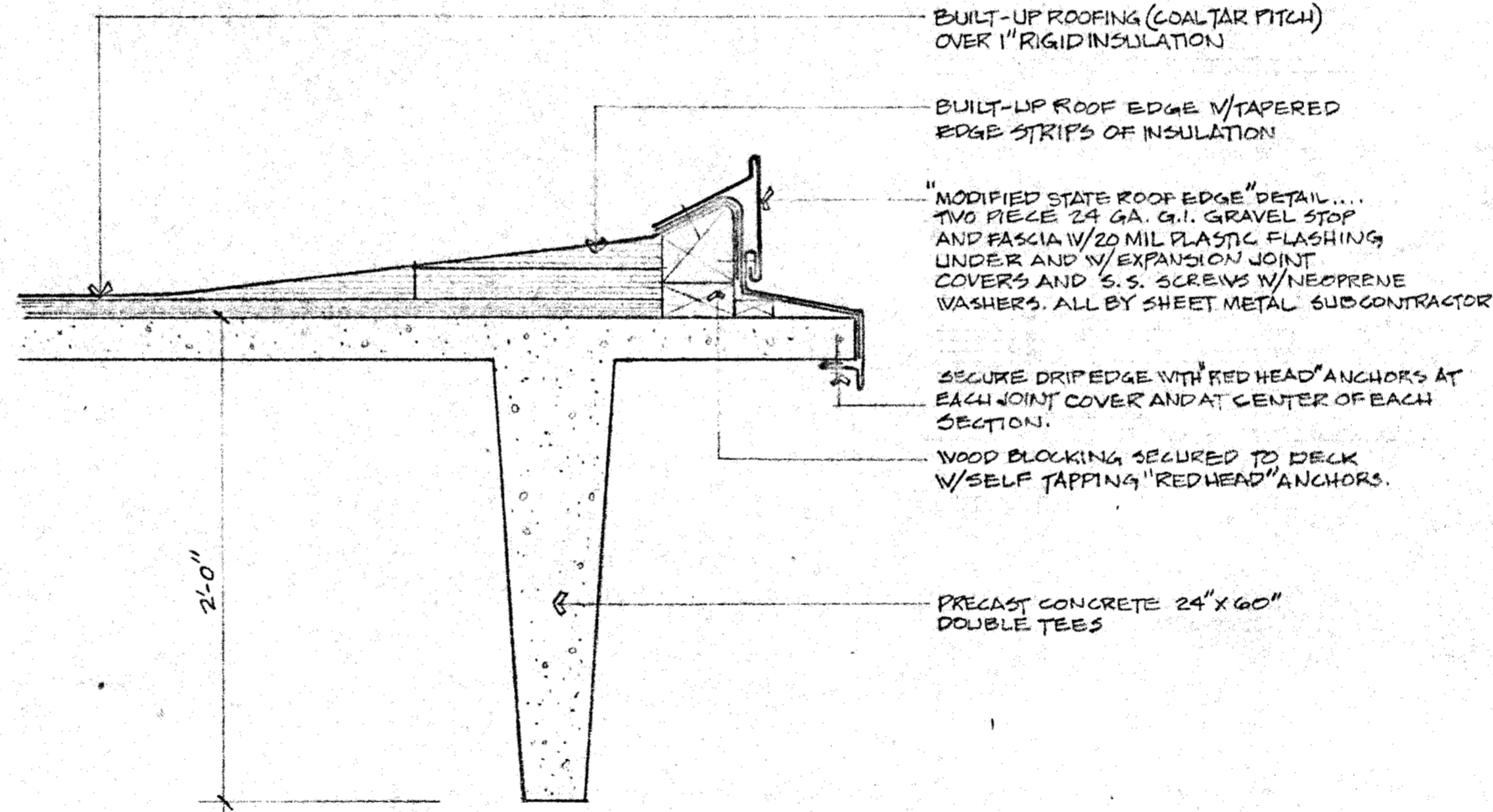


SECTION 2
SCALE: 1/2" = 1'-0"

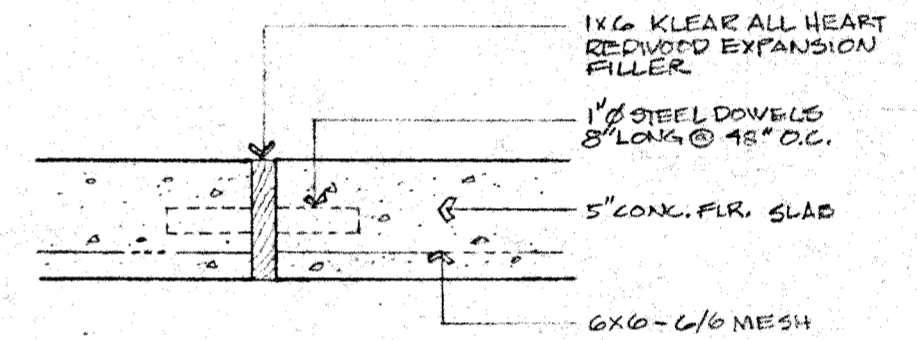


DOOR JAMB DETAIL 3
SCALE: 1/2" = 1'-0"

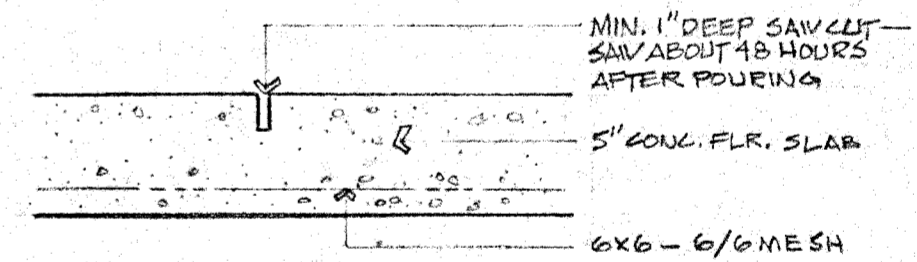
NOTE: UNDERCUT DOOR AND FRAME 1" FROM FLOOR & CAP BOTTOM OF FRAME.



ROOF DETAIL 4
SCALE: 1/2" = 1'-0"



FLOOR EXPANSION JOINT DETAIL 5
SCALE: 1/2" = 1'-0"



FLOOR DUMMY JOINT DETAIL 6
SCALE: 1/2" = 1'-0"

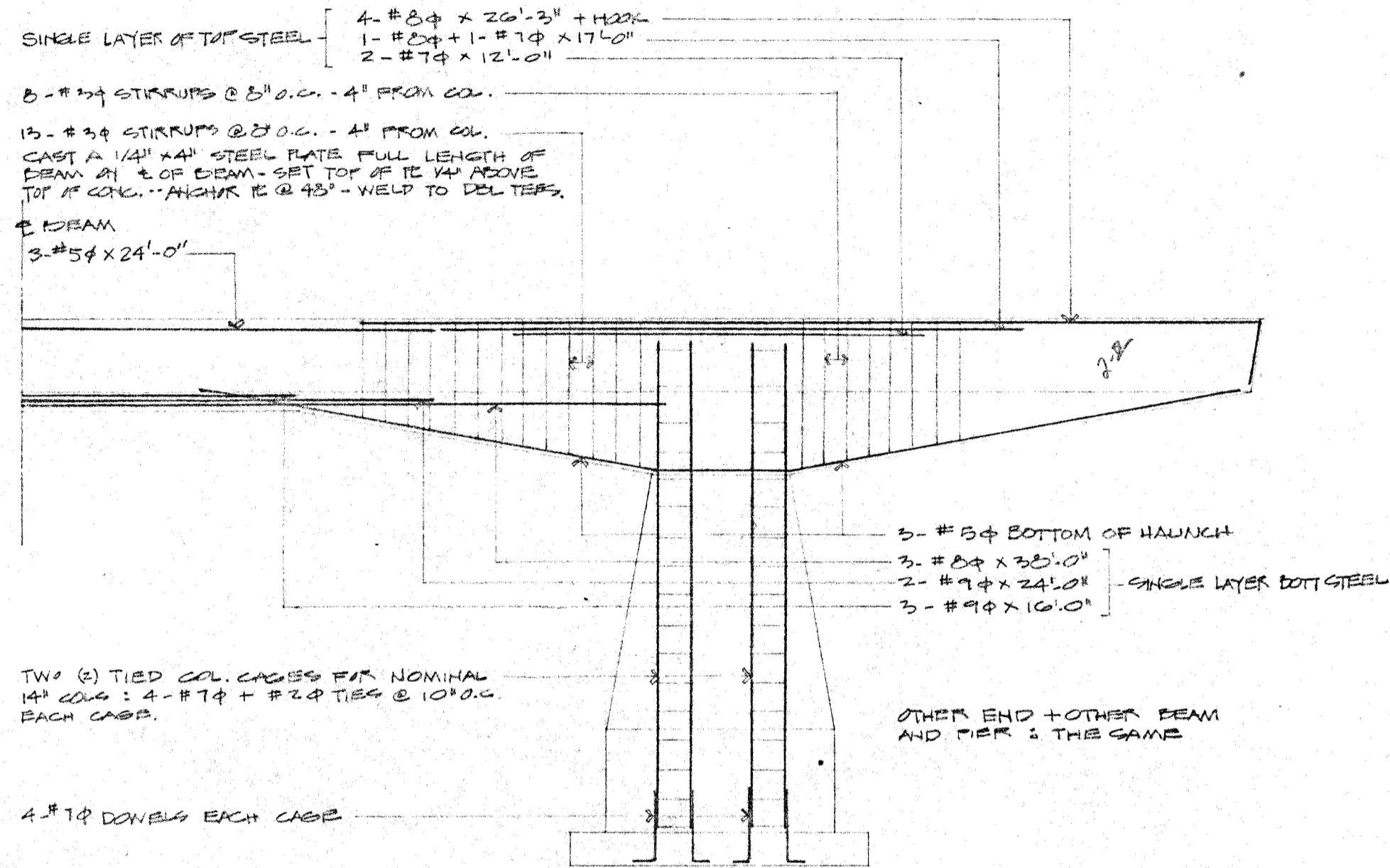
PENN PARK PLAYGROUND SHELTER
MADISON, WISCONSIN

**Associated
Architects
Incorporated**

Madison Wisconsin
drawn by: R.K.
date: OCT. 1969
revision: 620
Richard Koeber, Gene Price and Associates

PRECAST PRESTRESSED 24" DOUBLE TEES x 15'-0" WIDE. DESIGN FOR 30' W/ SLOW LOAD; 12' W/ ROOFING + DEAD LOAD OF MEMBERS.

CAST-IN-PLACE CONCRETE BEAM & PIER - SEE ELEVATION BELOW.



ELEVATION OF BEAM & PIER
SCALE: 1/4" = 1'-0"

ALL #7φ & LARGER BEAM STEEL: $f_y = 60,000$ PSI
ALL OTHER STEEL: $f_y = 40,000$ PSI
CONCRETE: $f'_c = 3,000$ PSI



ROOF FRAMING PLAN
SCALE: 1/8" = 1'-0"

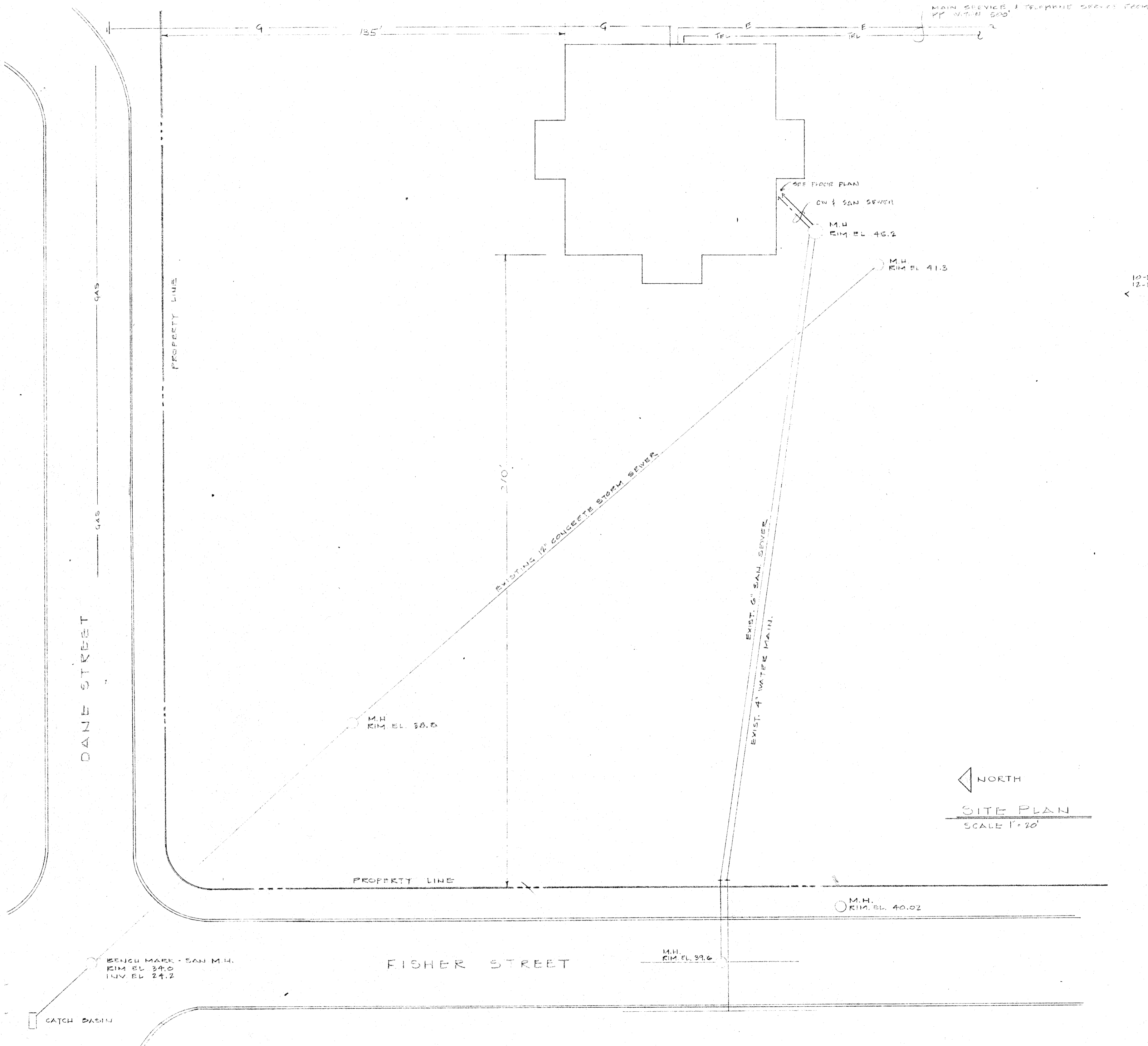
PENN PARK PLAYGROUND SHELTER
MADISON, WISCONSIN

Associated
Architects
Incorporated

Madison Wisconsin
Drawn by: R.K.
Date: OCT. 1969
Commission: GR20



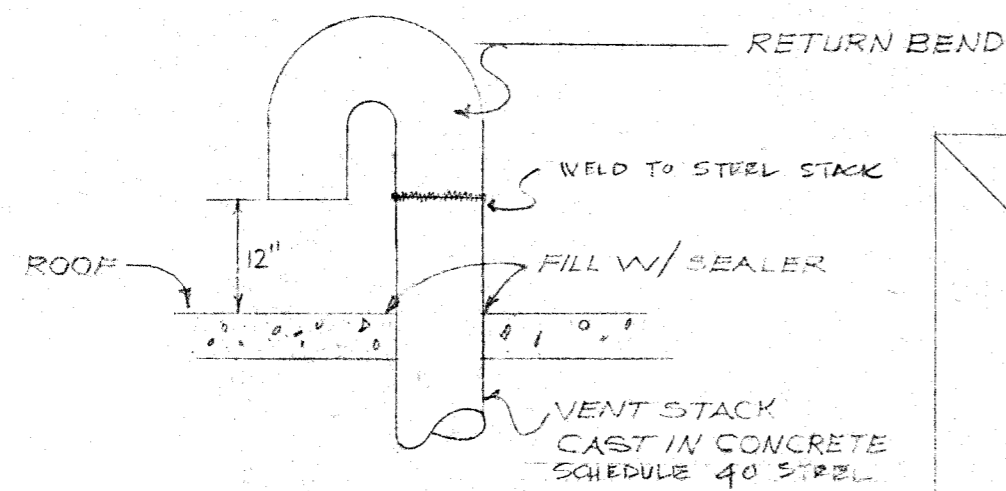
Richard Koster, Gene Price and Associates



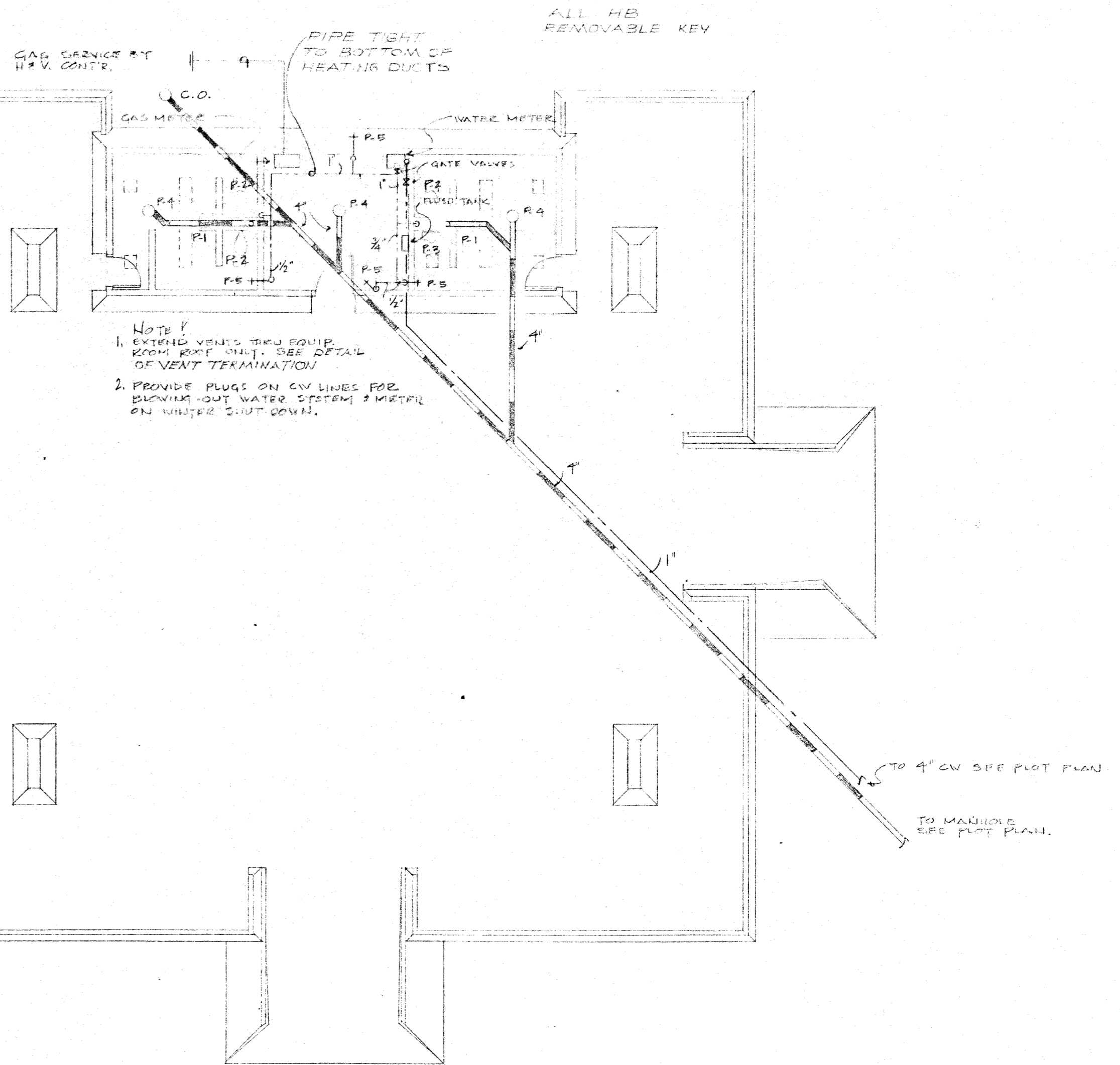
NORTH
 SITE PLAN
 SCALE 1" = 20'

PENN PARK PLAYGROUND SHELTER
 MADISON, WISCONSIN
**Associated
 Architects
 Incorporated**
 Madison, Wisconsin
 drawn by: E.P.
 date: OCT. 1969
 consultation: 6920
 Richard Krohn; Gene Pifer and Associates

FIXTURE SCHEDULE						
NO	ITEM	CW	HW	WASTE	VENT	REMARKS
P-1	LAVATORY	1/2"	-	1 1/2"	1/4"	
P-2	WATER CLOSET	1"	-	3"	2"	
P-3	URNIAL	1/2"	-	2"	1/2"	FLUSH VALVE
P-4	FLOOR DRAIN	-	-	3"	-	SEE SPEC.
P-5	HOSE BIB	1/2"	-	-	-	



VENT THRU ROOF

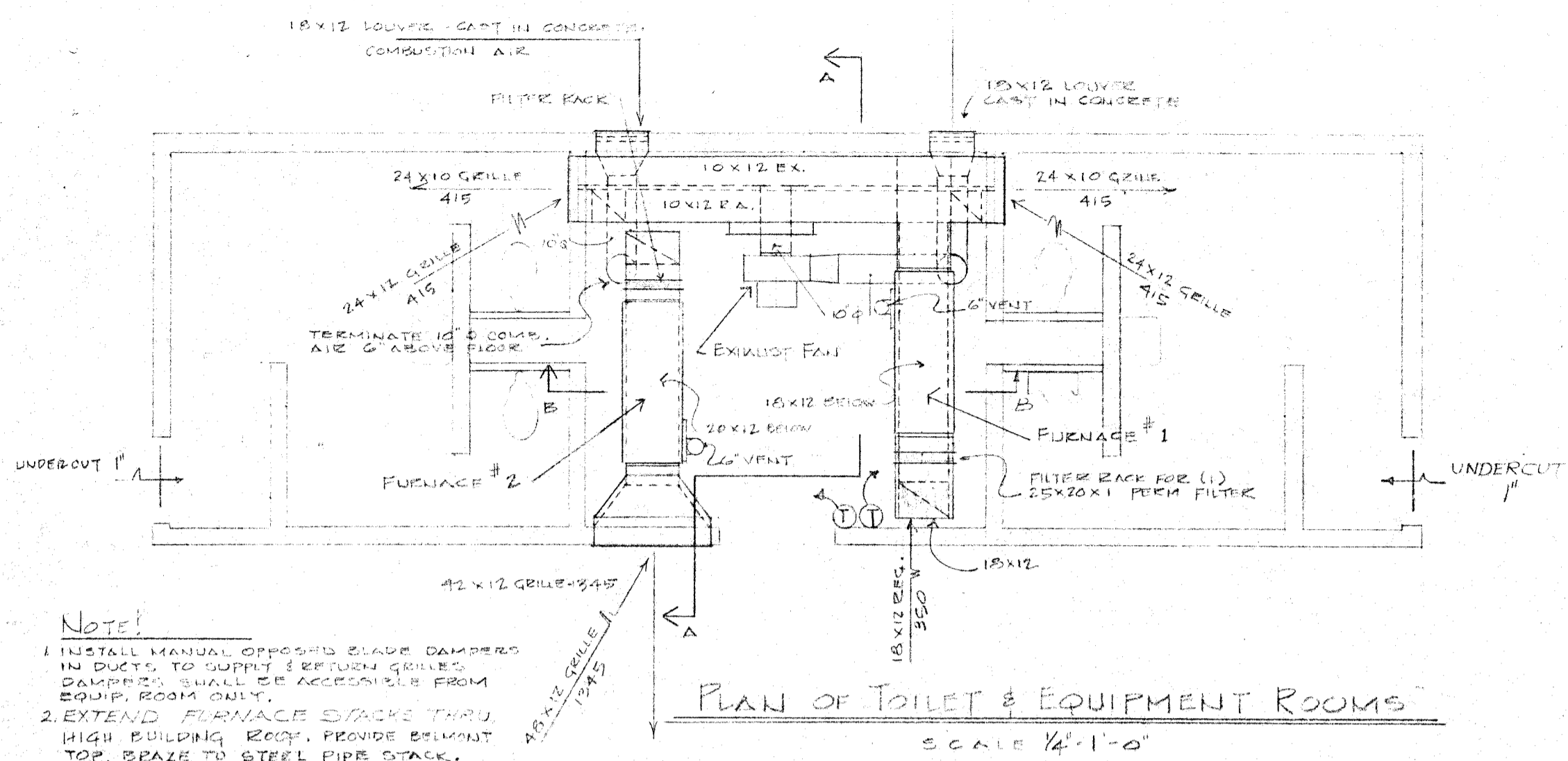


PENN PARK PLAYGROUND SHELTER
MADISON, WISCONSIN

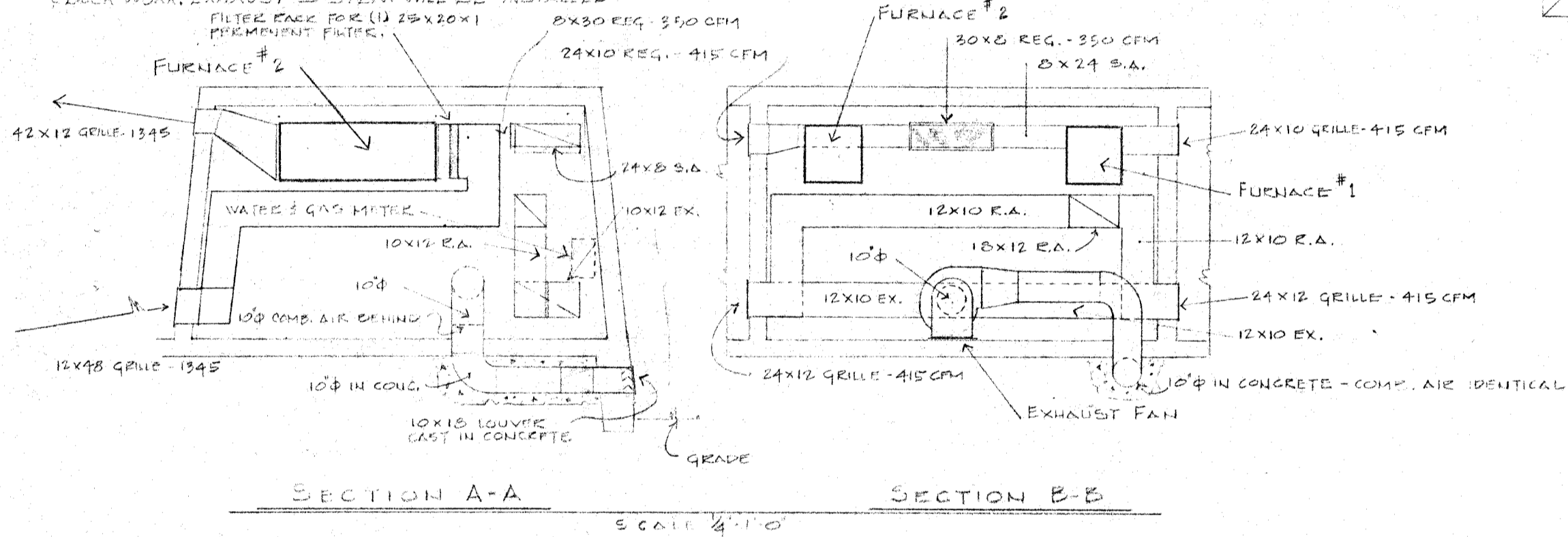
**Associated
Architects
Incorporated**

Madison Wisconsin
Drawn by: B.D.
Date: Oct. 1969
Commission: 6920

Richard Knothe, Gause Pring and Associates



NOTE:
1. INSTALL MANUAL OPPOSED BLADE DAMPERS IN DUCTS TO SUPPLY & RETURN GRILLS. DAMPERS SHALL BE ACCESSIBLE FROM EQUIP. ROOM ONLY.
2. EXTEND FURNACE STACKS THRU HIGH BUILDING ROOF. PROVIDE BELMONT TOP, BRAZE TO STEEL PIPE STACK.
3. SEE PROPOSAL FOR ALTERNATE HEV & ELECTRICAL WORK. ALL GRILLES & LOUVERS WILL BE INSTALLED & CAST IN PLACE. ALT WILL CONSIST OF THE REMOVAL FURNACE & DUCT WORK. EXHAUST SYSTEM WILL BE INSTALLED.



FURNACE SCHEDULE						
NO.	MODEL	AGA INPUT	AGA OUTPUT	CFM	HP	REMARKS
1	80CH 140	140,000	112,000	1175	1/2	
2	80CH 160	160,000	128,000	1345	3/4	

MAIN PANEL

50'0" 90 930 MG 22.5 S SURFACE MFG.

200 AMP 115/220/60/1

1 - MAIN BRK - 2P - 200 AMP

9 - 1P - 20 AMP

2 - 2P - 20 AMP

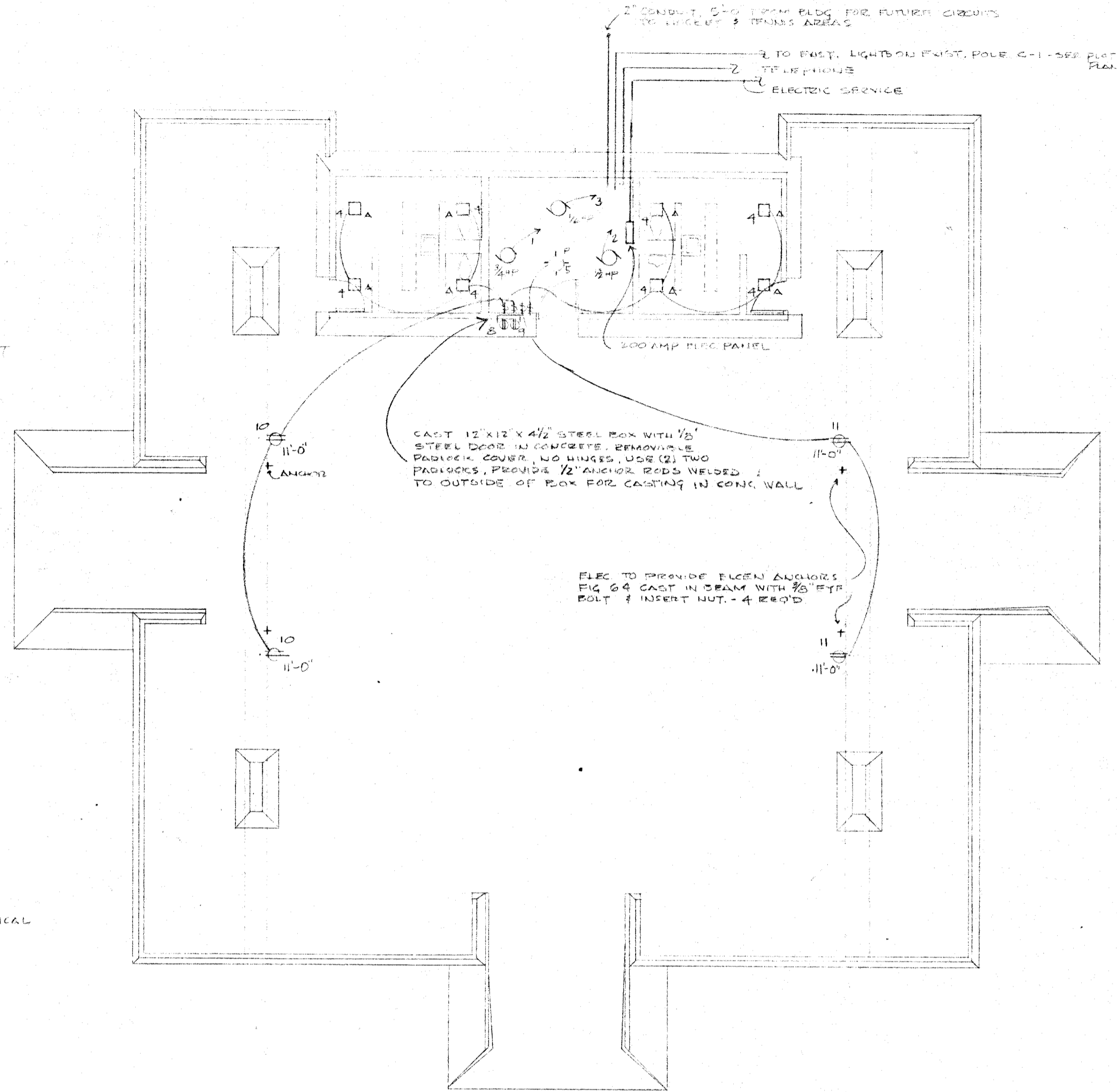
4 - 1P - 20 AMP SPARKS

10 - 1P - SPACES

NOTE: ALL GRILLS AND LOUVERS SHALL BE FABRICATED FROM STEEL ANGLE OR BEAT PLATE FRAMES WITH 14 GA EXPANDED STEEL GRILLAGE THERE TO.

FIXTURES

- A' HOLOPHANE A-739 HS, PLASTER RING, 1-100 WATT, 1 1/2" DEEP CAST IN CONCRETE
- P' PASS SEYMOUR NO. 85 1-100 WATT
- ⊕ SWITCH
- ⊕ WALL PLUG



PENNY PARK PLAYGROUND SHELTER
MADISON, WIS CONJON

Associated
Architects
Incorporated

Melvin Wiscarie
Arch. Eng. S.D.
date: OCT. 1967
completion: 6/720
Richard Kestler, Gene Price and Associates